

STRAIGHT BULKHEAD JACKS CRIMP TYPE FOR FLEXIBLE CABLES

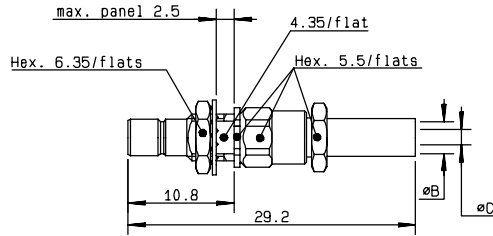


Fig. 1

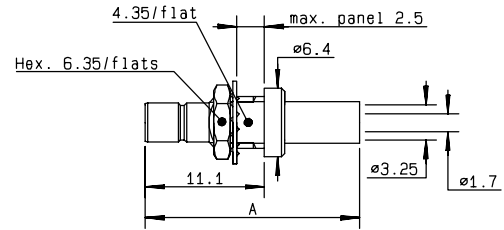


Fig. 2

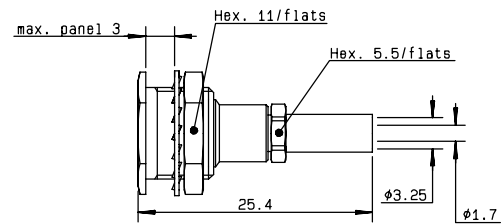


Fig. 3

cable	part number	fig.	dimensions			captive center contact	assembly	panel	finish	note
			A	B	C					
2/50/S	R114 311 000	1		2.55	1	yes	M03	P01	Gold	back mount
2.6/50+75/S	R114 312 000	1		3.25	1.7	yes	M03	P01	Gold	back mount
2.6/50+75/S	R114 313 000	2	22			yes	M10	P01	Gold	back mount / full crimp
2.6/50+75/S	R114 313 020	2	20			yes	M10	P01	Nickel	back mount / full crimp
2.6/50+75/S	R114 316 000	3				yes	M03	P10	Gold	recessed/front mount
2.6/50+75/S	R114 316 020	3				yes	M03	P10	Nickel	recessed/front mount
2.6/50/D	R114 315 000*•	2	20			yes	M10	P01	Gold	back mount / full crimp

STRAIGHT BULKHEAD JACKS CLAMP TYPE FOR FLEXIBLE CABLES

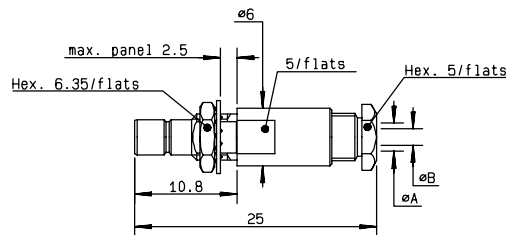


Fig. 1

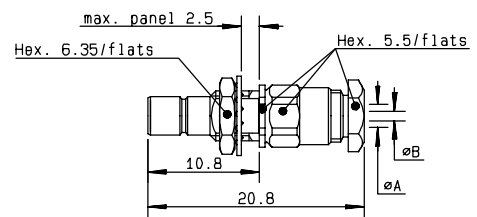


Fig. 2

cable	part number	fig.	dimensions		captive center contact	assembly	panel	finish	note
			A	B					
2/50/S	R114 303 000	1	2.2	1	yes	M02	P01	Gold	
2/50/S	R114 303 133	2	2.2	1	yes	M01	P01	Gold	conical braid clamp
2.6/50+75/S	R114 305 000	1	3	1.7	yes	M02	P01	Gold	
2.6/50+75/S	R114 305 133	2	3	1.7	yes	M01	P01	Gold	conical braid clamp

• upon request

* packaging: unit